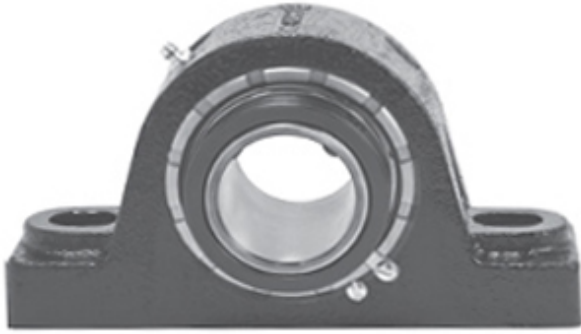




KORTON INDUSTRIAL LIMITED

1.938 Inch | 49.225 Millimeter x 3.813 Inch |
96.84 Millimeter x 2.25 Inch | 57.15 Millimeter
REXNORD BMA5115 Pillow Block Bearings



BMA5115 Bearing 2D drawings and 3D CAD models

Bearing No. BMA5115

Category	Pillow Block Bearings
Inventory	0.0
Manufacturer Name	REXNORD
Minimum Buy Quantity	N/A
Weight	6.719
EAN	0698210004378
Product Group	M06288
Number of Mounting Holes	2
Mounting Method	Concentric Collar
Housing Style	2 Bolt Pillow Block
Rolling Element	Spherical Roller Bearing
Housing Material	Cast Iron
Expansion / Non-expansion	Non-expansion
Mounting Bolts	5/8 Inch
Relubricatable	Yes
Insert Part Number	5115U
Seals	Heavy Contact
Housing Configuration	1 Piece Solid
Inch - Metric	Inch
Other Features	Double Row Double Collar Two Auxiliary End Cap With Set Screw
Long Description	2 Bolt Pillow Block; 1-15/16" Bore; 2-1/4" Base to Center Height; Concentric Collar Mount;



KORTON INDUSTRIAL LIMITED

	Spherical Roller Bearing; Relubricatable; Cast Iron; Heavy Contact; Non- expansion
Category	Pillow Block
UNSPSC	31171511
Harmonized Tariff Code	8483.20.40.80
Noun	Bearing
Keyword String	Pillow Block
Manufacturer URL	http://www.rexnord.com
Manufacturer Item Number	BMA5115
Manufacturer Internal Number	6800437
Weight / LBS	11.5
Bolt Spacing Minimum	0 Inch 0Millimeter
d	1.938 Inch 49.225 Millimeter
Nominal Bolt Center to Center	6.3 Inch 160 Millimeter
Actual Bolt Center to Center	6.3 Inch 159Millimeter
B	2.25 Inch 57.15 Millimeter
D	3.813 Inch 96.84 Millimeter
Bolt Spacing Maximum	0 Inch 0Millimeter