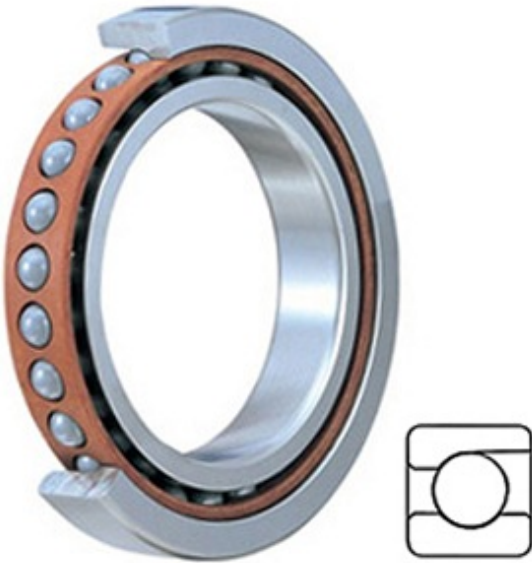




KORTON INDUSTRIAL LIMITED



2MM211WI Bearing 2D drawings and 3D CAD models

2.165 Inch | 55 Millimeter x 3.937 Inch | 100 Millimeter x 0.827 Inch | 21 Millimeter TIMKEN 2MM211WI Precision Ball Bearings

Bearing No. 2MM211WI

Category	Precision Ball Bearings
Inventory	0.0
Manufacturer Name	TIMKEN
Minimum Buy Quantity	N/A
Weight	0.631
EAN	0087796070592
Product Group	B04270
Enclosure	Open
Precision Class	ABEC 7 ISO P4
Material - Ball	Steel
Number of Bearings	1 (Single)
Contact Angle	15 Degree
Preload	None
Raceway Style	1 Rib Outer Ring
Cage Material	Phenolic
Rolling Element	Ball Bearing
Flush Ground	No
Inch - Metric	Metric
Other Features	Single Row Angular Contact Super High Precision
Long Description	55MM Bore; 100MM Outside Diameter; 21MM Width; Open Enclosure; ABEC 7 ISO P4 Precision; Steel Ball Material; 1 (Single) Bearings; 15 Degree



KORTON INDUSTRIAL LIMITED

	Contact Angle; Phenolic Cage Material; 1 Rib Outer Ring Ra
Category	Precision Ball Bearings
UNSPSC	31171531
Harmonized Tariff Code	8482.10.50.28
Noun	Bearing
Keyword String	Angular Contact Ball
Manufacturer URL	http://www.timken.com
Manufacturer Item Number	2MM211WI
Weight / LBS	1.39
D	3.937 Inch 100 Millimeter
B	0.827 Inch 21 Millimeter
d	2.165 Inch 55 Millimeter
d - Bore	55 mm
D - Outer Diameter	100 mm
Bearing Width	21 mm
do - Ball Diameter	14.287500 mm
C0 - Static Radial Rating	40000 N
Ce - Dynamic Radial Rating ¹	58700 N
Limiting Speed (Grease)	14500 rpm
Limiting Speed (Oil)	29000 rpm
Ball Type	STEEL
Cage Type	CR - Phenolic Outer Land Riding Cage
Bearing Weight	0.608 Kg
Design Units	METRIC
Full Timken Part Number	2MM211WICR
R - Inner Ring To Clear Radius ²	1.5 mm
r - Outer Ring To Clear Radius ³	1.5 mm
da - Inner Ring Backing	63.300 mm



KORTON INDUSTRIAL LIMITED

Diameter	
Da - Outer Ring Backing Diameter	92.200 mm